

**Session name:**

PIATT OFFICE

**Session UUID:**

2d558d27-23e3-40e7-a7a0-694d14a40390

**Description:**

TRANSFER SW 2 + 3

**Notes:**

**Study Type:**

Energy study

**Measurement Mode:**

**Topology:**

3-ph Wye

**Nominal Voltage:**

120V

**Nominal Frequency:**

60Hz

**Buffer Type:**

linear (do not overwrite)

**Start and End Dates:**

Configured start: 10/25/2024 2:26:13 PM

Configured end: 11/22/2024 9:29:33 PM

Actual start: 10/25/2024 2:26:13 PM

Actual end: 11/14/2024 7:23:20 AM

**Duration:**

Configured duration: 28d 8h 3m 20s

Actual duration: 19d 17h 57m 7s

**Number of averaging intervals:**

Number of trend intervals as configured: 244819

Number of trend intervals as present: 170623

Trend interval length: 10sec

Number of demand intervals as configured: - - -

Number of demand intervals as present: 0

Demand interval: - - -

Number of PQ intervals as configured: 4079

Number of PQ intervals as present: 2843

PQ interval length: 10min

**Event limits:**

Dip: 90%

Swell: 110%

Interruption: 5%

Hysteresis: 2%

Inrush current: - - -

Rapid Voltage Changes: - - -

Waveform Deviation: - - -

Mains signalling voltage limit: - - -

Sliding Reference: Off

**Event:**

Events recorded: 8

	Phase A	Phase B	Phase C	Neutral	Combined events
Dip	1	1	1		1
Swell	0	0	0		0
Interruption	1	1	1		1
Inrush Current	0	0	0	0	
Waveshape Deviation	0	0	0		

Waveform recordings: 1

RMS recordings: 1

MSV recordings: 0

**Instrument information:**

Instrument Type: FLUKE 1738

Installed Licenses: WiFi-Infrastructure

Instrument versions: Firmware Version: 2.2

DSP Version: 2.7

Instrument Serial Number: 47323812

Instrument UUID: 2b2c59fe-109d-4477-b52e-269b50685f2d

Instrument time zone: America/Chicago

Instrument name: FLUKE1738&lt;47323812&gt;

**Attached Current Sensors:**

Channel	Ratio	Model	Range	Serial No
1 - A	1:1	iFlex3000-24	3000A	487612067
2 - B	1:1	iFlex3000-24	3000A	491972021
3 - C	1:1	iFlex3000-24	3000A	487612069
4 - N	1:1	Not connected	-	-

**Voltage mapping:**

Channel	Ratio
1 - A	1:1
2 - B	1:1
3 - C	1:1

**Aux Settings:**

Channel	Gain	Offset	Unit
Aux1	1	0	V
Aux2	1	0	V



### V, A, Hz, THD overview table

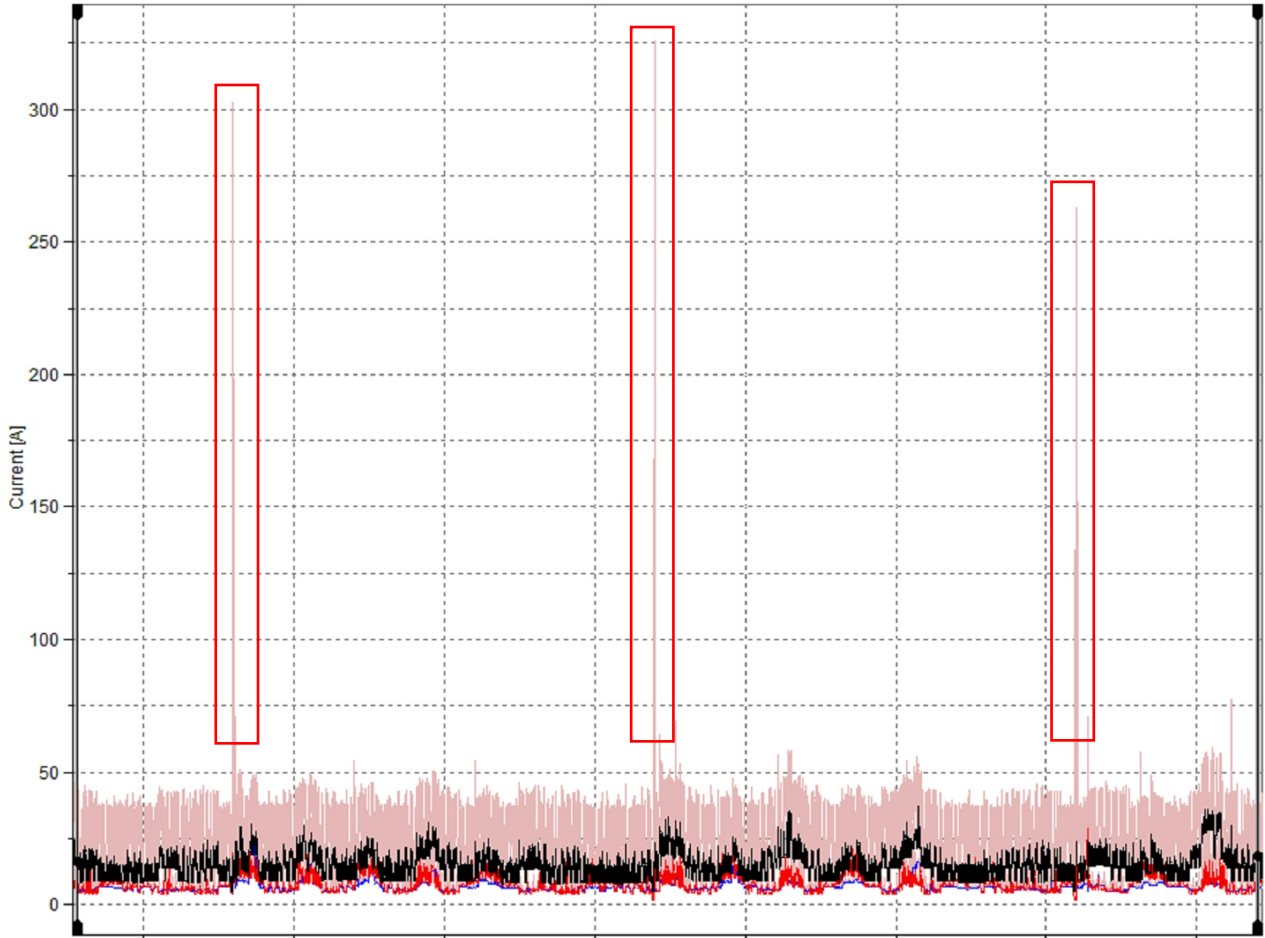
PIATT OFFICE				
Logging Information				
Study type:	Energy study		Topology:	3-ph Wye
Start date:	10/25/2024 2:26:13 PM		End date:	11/14/2024 7:23:20 AM
Duration:	19d 17h 57m 7s			
Averaging interval:	10sec		Number of averaging intervals:	170623
Voltage [mV]	AN	BN	CN	N
Max	149.6 mV 11/14/2024 7:23:20 AM	67.8 mV 11/11/2024 9:51:20 AM	76.9 mV 11/8/2024 1:04:10 AM	
linear Avg	51.6 mV	45.3 mV	48.8 mV	
Min	0.0000 mV 10/25/2024 2:26:30 PM	4.1 mV 11/11/2024 9:51:20 AM	0.0000 mV 11/11/2024 9:51:20 AM	
Current [A]	A	B	C	N
Max	326.6 A 11/4/2024 5:15:30 AM	160.4 A 11/11/2024 5:15:40 AM	306.8 A 11/4/2024 5:15:30 AM	0.0000 A 10/25/2024 2:26:20 PM
linear Avg	14.2 A	7.1 A	6.7 A	0.0000 A
Min	0.0000 A 11/11/2024 9:51:20 AM	0.0000 A 11/11/2024 9:51:20 AM	0.0000 A 11/11/2024 9:51:20 AM	0.0000 A 10/25/2024 2:26:20 PM
Frequency [Hz]	AN			
Max				
linear Avg				
Min				
V THD [%]	AN	BN	CN	N
Max				
linear Avg				
Min				
A THD [%]	A	B	C	N
Max				
linear Avg				
Min				

### Averaging interval:

	Configured Interval length
PIATT OFFICE	10sec



V, A, Hz, THD graph



1  
 10/26/2024 6:23:49 PM      10/31/2024 6:23:49 PM      11/5/2024 5:23:49 PM      11/10/2024 5:23:49 PM  
 1: Current Avg [A] A      1: Current Avg [A] B      1: Current Avg [A] C  
 1: Current Max [A] A      1: Current Max [A] B      1: Current Max [A] C

Cursor 1:  
 1: Current Avg [A] A  
 16.2 A  
 10/25/2024 3:54:20.077 PM

Cursor 2:  
 1: Current Avg [A] A  
 18.2 A  
 11/14/2024 5:23:30.077 AM

Delta:  
 2.0 A  
 19d 14h 29m 10.000s

**Graph Options:**

Logging Sessions	ID
PIATT OFFICE	1

Left Scale Options	L1 (A)	L2 (B)	L3 (C)	N	Total	Min/Max
Curr [A]	X	X	X			-   X